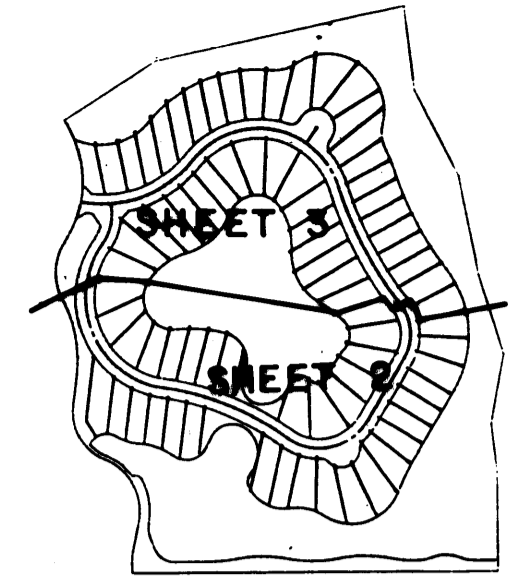
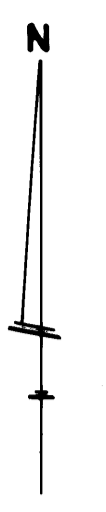


A PLAT OF PARCEL 52 AT THE MEADOWS

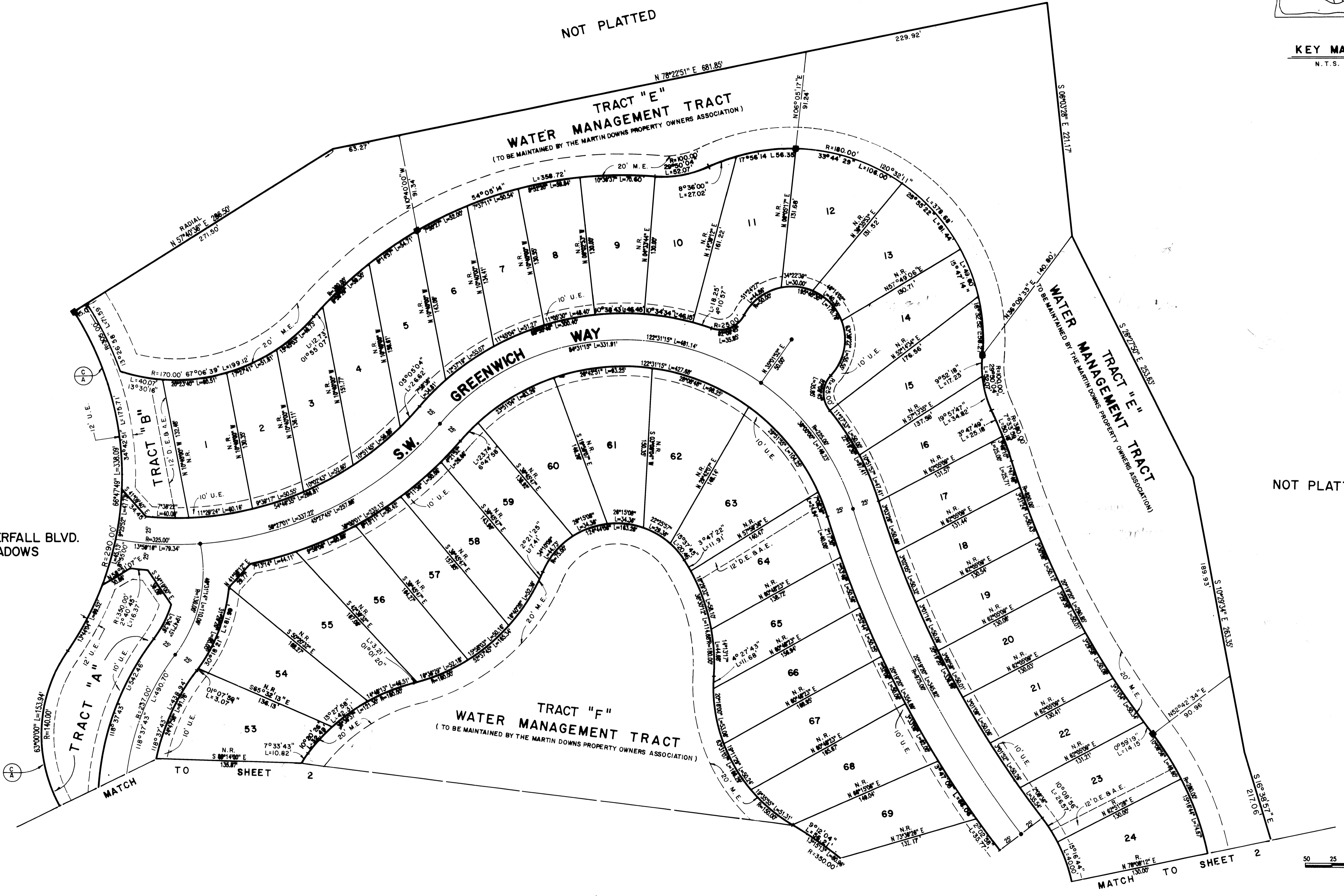
BEING PLAT NO. 43 OF MARTIN DOWNS A P.U.D.
LYING IN SECTIONS 12 AND 13, TOWNSHIP 38 SOUTH, RANGE 40 EAST,
MARTIN COUNTY, FLORIDA
SHEET 3 OF 3 MARCH, 1988



KEY MAP
N.T.S.

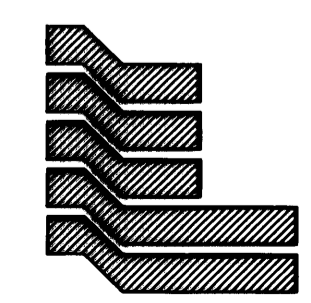
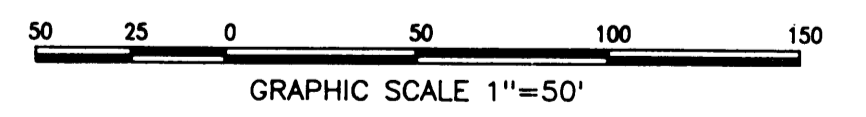


I, MARSHA STILLER, CLERK OF THE CIRCUIT COURT OF MARTIN COUNTY, FLORIDA, HEREBY CERTIFY THAT THIS PLAT WAS FILED FOR RECORD IN PLAT BOOK 11, PAGE 29, MARTIN COUNTY, FLORIDA, PUBLIC RECORDS, THIS DAY OF _____, A.D. 19____.
MARSHA STILLER, CLERK OF CIRCUIT COURT MARTIN COUNTY, FLORIDA
BY: _____ DEPUTY CLERK
FILE NO. _____



SOUTHWEST WATERFALL BLVD.
AT THE MEADOWS
P.B. 11, PGS 23

NOT PLATTED



Landmark Surveying & Mapping Inc.
1850 FOREST HILL BOULEVARD
PH. (305)433-5405 SUITE 100 W.P.B. FLORIDA

PARCEL 52 AT THE MEADOWS